



### W.H.P.M.Bioresearch & Technology Co., Ltd

- Address: No.2 Zhongxin Street,Louzi Zhuang,Jinzhan Xiang, Chaoyang District,Beijing,P.R.China
- Zip Code:100018

 Follow us on [twitter.com/hemosure](https://twitter.com/hemosure)

 Like us on [facebook.com/hemosure](https://facebook.com/hemosure)

- Tel.: 0086-10-84391888,84319330
- Fax.:0086-10-84397888-117
- Email:[customerservice@whpm.com.cn](mailto:customerservice@whpm.com.cn)
- Website:[www.whpm.com](http://www.whpm.com)

 [hemosure.com](http://hemosure.com)

# One-Step Drugs of Abuse Tests

## ECO CUP

### Multi-drug Screen Test Cup

Up to 14 analytes per panel

#### Product Information

The ECO CUP® One-Step Drug Test is a compact, economic urine testing device based on competitive immunoassay technology utilizing highly specific reactions between antibodies and antigens for the detection of multiple drugs and drug metabolites in human urine without the use of an instrument.

- 10-70mL
- Compact & Economic Design
- Reaction Time Within 5 min
- Adulteration Strip and/or Temperature Strip Optional



## ECO II CUP

### Multi-drug Screen Test Cup

Up to 20 analytes per panel

#### Product Information

The ECO II® is our best-seller world-wide. This competitive immunoassay DOA testing device features an economic design to minimize transportation and storage costs. The ECO II® features a wide mouth design for easy sample collection, a compact size to minimize transportation costs, and sturdy construction to prevent leaks or damage.

- 30-110 mL
- Compact Design with Wide Mouth
- Reaction Time Within 5 min
- Adulteration Strip and/or Temperature Strip Optional



## ECO II CUP VACUUM

### Multi-drug Screen Test Cup

Up to 20 analytes per panel

#### Product Information

The same great features of the original ECO II® with added functionality. This compact and user-friendly competitive immunoassay DOA testing device comes with the added convenience of a Vacuum tube sampling device on the lid. Urine specimens can easily and quickly be collected from the sample cup and stored for future processing with no need to pour. Featuring a hard-plastic cover over the sampling port, the users are well protected from the built-in sampling syringe.

- 30-110 mL
- Vacuum Tube Ready for Easy Specimen Retention
- Safety Cap to Protect User from Sample Syringe
- Adulteration Strip and/or Temperature Strip Optional



## ECO III CUP

### Multi-drug Screen Test Cup

Up to 14 analytes per panel

#### Product Information

With a Wide Mouth and Flat Panel design the ECO III® is specifically designed for easy operation and documentation. This competitive immunoassay DOA testing device features double FLAT SIDED test viewing windows perfect for taking photos, scans, or copies of the final test results.

- 30-150 mL
- FLAT SIDES for Easy Viewing and Documentation .
- Wide Mouth Design for Easy Use.
- Adulteration Strip and/or Temperature Strip Optional



## ECO IV CUP

### Multi-drug Screen Test Cup

Up to 18 analytes per panel

#### Product Information

The Classic DOA urine cup. This large cylindrical cup ensures ease of use with a large opening for sample collection and plenty of volume for accurate testing and validation as required. As with all ECO Series cups, the ECO IV relies on competitive immunoassay technology utilizing highly specific reactions between antibodies and antigens for the detection of multiple drugs and drug metabolites in human urine without the use of an instrument.

- 10-140 mL
- Classic Design with Wide Mouth and Easy to Handle Cup Body
- Higher Specimen Volume for Confirmation Testing
- Adulteration Strip and/or Temperature Strip Optional



## ECO V CUP

### Multi-drug Screen Test Cup (Push Button)

Up to 14 analytes per panel

#### Product Information

Accurate results and maximum traceability. The ECO V is a relatively compact push-button Urine DOA testing device designed to minimize the potential of tampering/misrepresentation of results while maximizing testing accuracy and transparency. Once activated the cup transfers 2ml of specimen to a separate reaction zone, allowing the tester to be in complete control of reaction time. The built in FLAT PANEL result viewing window is perfect for easy interpretation and documentation of the testing results.

- 10-110 mL
- Push Button Design for Controlled Testing Environments
- Large Flat Panel Result Viewing Window
- Adulteration Strip and/or Temperature Strip Optional



# FIRST SIGN PUSH BUTTON CUP

One-Step Multi-Drug Screen Test Cup (Push Button)

Up to 12 analytes per panel

## Product Information

The ultimate in result reporting transparency. The First Sign Push Button design allows testers to trigger the release of the specimen with the simple push of a button. With a flat panel testing zone, the First Sign Push Button is easy to use and highly configurable with a wide variety of our competitive immunoassay DOA test analytes.

- 30-100 mL
- Push Button with Tear-off Key Tampering Prevention.
- Flat & Easy to Document Result Viewing Window
- Built-in Temperature Strip with Optional Adulteration Strip



# FIRST SIGN DIPCARD & CASSETTE

One-Step Single & Multi-Panel Test

Up to 14 analytes per panel

## Product Information

### Dipcard Series

The First Sign Dipcard Series product line is a highly configurable and customizable DOA testing device. Designed for economy, accuracy, and ease of use, First Sign Drugs of Abuse Dipcard tests are a rapid, one-step screening test for the simultaneous, qualitative detection of multiple drugs and drug metabolites in human urine. Featuring 9 unique cassette options from single analyte up to 18 analytes in a single device, the Dipcard Series is a highly flexible solution that will minimize testing costs while providing the requested panel in a simple, easy to use package.

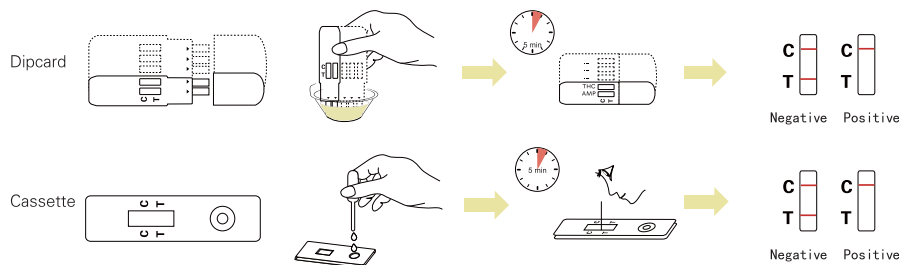
- Fast & Accurate Results
- Economic Design Reduces Testing Costs
- Highly Flexible with 9 Cassette Options and 100's of Possible Configurations

### Cassette Series

The First Sign Cassette series is the best value in Drugs of Abuse testing. Available in configurations of up to 1, 3, or 5 analytes of both illicit and prescription drugs, the First Sign Cassette is the perfect DOA testing device for a laboratory environment with limited sample volume. Requiring only 3 ml of sample per analyte, the First Sign Cassette is a simple, user-friendly, and highly-accurate competitive immunoassay DOA testing device.

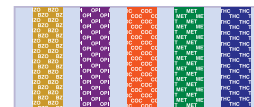
- Great Value
- Low Volume Required (3 ml Per Analyte)
- Each Test is a Complete Kit Including Pipette
- Cassette Options of 1, 3, or 5 Tests per Panel

## Test Procedure



## Urine Test Analytes Available

Test	Calibrator	Cutoff(ng/mg)
Amphetamine(AMP 1000)	d-Amphetamine	1000
Amphetamine(AMP 500)	d-Amphetamine	500
Amphetamine(AMP 300)	d-Amphetamine	300
Barbiturates(BAR 300)	Secobarbital	300
Barbiturates(BAR 200)	Secobarbital	200
Benzodiazepines(BZO 300)	Oxazepam	300
Benzodiazepines(BZO 200)	Oxazepam	200
Buprenorphine(BUP 10)	Buprenorphine	10
Buprenorphine(BUP 5)	Buprenorphine	5
Cocaine(COC 300)	Benzoylcegonine	300
Cocaine(COC 150)	Benzoylcegonine	150
Marijuana(THC 50)	11-nor- $\Delta^9$ -THC-9 COOH	50
Marijuana(THC 20)	11-nor- $\Delta^9$ -THC-9 COOH	20
Methodone(MTD)	Methodone	300
Methamphetamine(mAMP 1000)	d-Amphetamine	1000
Methamphetamine(mAMP 500)	d-Amphetamine	500
Methamphetamine(mAMP 300)	d-Amphetamine	300
Opiate300(OPI 300,MOP,MOR)	Morphine	300
Opiate300(OPI 100,MOP,MOR100)	Morphine	100
Opiate2000(OPI 2000)	Morphine	2000
Oxycodone(OXY)	Oxycodone	100
Phencyclidine(PCP)	Phencyclidine	25
Propoxyphene(PPX)	Propoxyphene	300
Tricyclic Antidepressants(TCA)	Nortriptyline	1000
6-Acetylmorphine(6-ACM)	6-Acetylmorphine	10
Cotinine(COT)	Cotinine	200
Ketamine(KET)	Ketamine	1000
Fentanyl(FEN)	Fentanyl	200
Tramadol(TRA 100)	Tramadol	100
Tramadol(TRA50)	Tramadol	50
Methylenedioxypropylvalerone(MDPV)	Methylenedioxypropylvalerone	1000
Ethyl Glucuronide(ETG)	Ethyl Glucuronide	300
Methylenedioxymethamphetamine(MDMA)	DL/Methylenedioxymethamphetamine/Morphine	500
2-Ethylidene-1,5-dimethyl-3,3-dipheylpyrrolidine(EDDP 300)	2-Ethylidene-1,5-dimethyl-3,3-dipheylpyrrolidine	300
Synthetic Cannabinoid(K2 50)	JWH-018 Pentanoic Acid/JWH-073 Butanoic Acid	50
Synthetic Cannabinoid(K2 20)	JWH-018 Pentanoic Acid/JWH-073 Butanoic Acid	20
Alcohol(ALCO)	Alcohol	>0.04%



Drug Parameters are Color Coded for Improved Readability.

New Parameters Quarterly:

W.H.P.M. is continuously developing new DOA parameters to meet the needs of the ever-changing market.

## ORAL FLUID SALIVA TEST

Oral Fluid Multi-Drug and Alcohol Screen Device

Up to 10 analytes per panel

### Product Information

The ORAL FLUID SALIVA TEST Is a rapid, screening test for the simultaneous, qualitative detection of Drugs of Abuse in human saliva. The simple design and easy testing process provide the user with a simple and straight forward DOA screening method.

- Great Value
- Up to 10 Tests per Panel
- Eliminate the Need for Controlled Collection Areas



## SWAB CUBE SALIVA TEST

Oral Fluid Multi-Drug and Alcohol Screen Device

Up to 12 analytes per panel

### Product Information

Featuring our patented sample delivery design, the Swab Cube Saliva Test effectively directs the sample to the testing area for highly accurate and rapid results. The flat panel design of the result reporting area is ideal for result reporting and visual record keeping.

- Patented Robust Design of High-Quality Materials for Maximum Accuracy
- Flat Panel Design for Result Reporting and Recording
- Up to 12 Tests per Panel



## ORAL CUBE SALIVA TEST

Oral Fluid Multi-Drug and Alcohol Screen Device

Up to 12 analytes per panel

### Product Information

Compact and user-friendly, the Oral Cube Saliva Test was designed with the user in mind. A simple Saliva test effectively eliminates the need for controlled private sample collection areas and provides quick and accurate results on a broad range of DOA analytes.

- Compact Design for Easy Transportation and Use
- Flat Panel Design for Result Reporting and Recording
- Dual Side Testing Area for up to 12 Tests per Panel
- Eliminate the Need for Same Sex Collectors

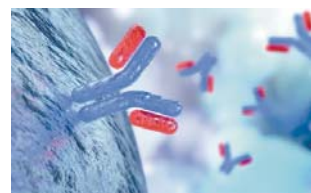
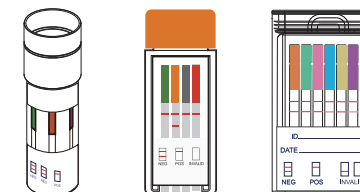


## Saliva Test Analytes Available

Test	Calibrator	Cutoff(ng/mg)
Amphetamine(AMP)	d-Amphetamine	50
Methamphetamine(mAMP)	d-Amphetamine	50
Cocaine(COC)	Benzoylcegonine	20
Opiate(OPI)	Morphine	40
Marijuana(THC)	11-nor- $\Delta^9$ -THC-9 COOH	12
	$\Delta^9$ -THC	50
	$\Delta^9$ -THC	75
Phencyclidine(PCP)	Phencyclidine	10
Benzodiazepines(BZO)	Oxazepam	50
Oxycodone(OXY)	Oxycodone	50
Methodone(MTD)	Methodone	75
	Methodone	30
Barbiturates(BAR)	Secobarbital	300
Buprenorphine(BUP)	Buprenorphine	10
Cotinine(COT)	Cotinine	30
Synthetic Cannabinoid(K2)	JWH-018 Pentanoic Acid/JWH-073 Butanoic Acid	20
Methylenedioxymethamphetamine(MDMA)	D,L/Methylenedioxymethamphetamine/Morphine	50
Fentanyl(FEN)	Fentanyl	10
Alcohol(ALCO)	Alcohol	> 0.02% B.A.C.

## General Information

- Test results: 10 minutes
- Specimen: Oral Fluid
- Easy and Convenient
- Eliminate Controlled Collection Site
- Test can be Performed Anytime, Anywhere
- No More Collection Fees
- Forensic Use Only



## In-house Antibody Production

At W.H.P.M. we develop and manufacture our own anti-bodies based on our in-house developed clones. This allows W.H.P.M. to ensure:

- Highly Stable Test Results from Lot to Lot.
- Reliable Supply Chain to Ensure Product Availability
- Very Competitive Pricing from Raw Materials through to Finished Products.